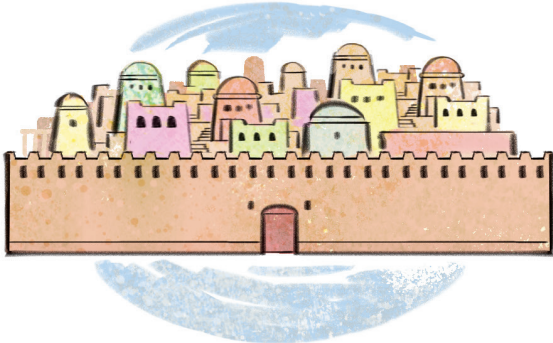
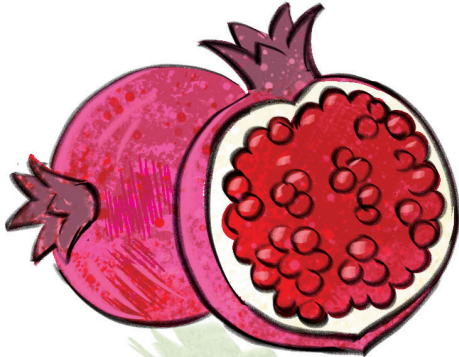
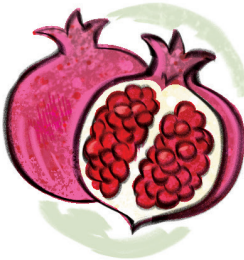


Which Is Smaller?

INSTRUCTIONS: When the 12 men returned from exploring the land, they felt small and they doubted God's plan. Look at the pictures in each section. Circle the one that is smaller than the other.



NAME:



theGOSPELPROJECT.



The People Doubted

Numbers 13–14

STORY POINT:

The people who doubted God were not able to enter the Promised Land.

CHRIST CONNECTION:

Joshua and Caleb believed the words that God had spoken, and they were allowed to enter the Promised Land. If we believe the words that God has spoken about Jesus and choose to follow Him, we will be saved from our sin and will be with Him forever.

KEY PASSAGE:

Romans 8:28

BIG PICTURE QUESTION:

Why should we obey God? We should obey God because He made us and He loves us.

Scan the QR code
for resources to
use at home!



Older Preschool Activity Pages

Unit 6 • Session 2